

APPLICATIONS

- Domestic boosting
- Fountains and water-plays
- Sprinkling and sliding domestic irrigations
- Depletion and pouring off of tanks
- Industrial washings
- Treatment of drinkable water
- Cooling systems

Sucked liquid:

Clean water, without abrasive and suspended parts

INSTALLATION

Steel pumps electropumps are suitable for:

- surface installation
- submerged installation

TECHNICAL FEATURES

- Pump body: stainless steel Aisi 304
- Motor body: stainless steel Aisi 304
- Back bracket: stainless steel Aisi 304
- Shaft: stainless steel Aisi 416
- Impellers: stainless steel Aisi 304
- Diffuser: Techno-polymer
- **Mechanical seal: silicon-silicon**
- Cooled motor (by water) of Class F and Service S1 with thermic protection
- Electric power cable H07 RN-F mt. 10 with plug
- **Protection class of the pump IP 68**
- Temperature of the pumped liquid from +2°C to +37°C (18 to 70 Fahrenheit)

AUTOMATIC VERSION

- Electronic board with Microprocessor
- Flow sensor with cobalt Samario magnets
- Pressure gauge for the pressure check
- Built-in check-valve
- Techno-polymer safety-box for the board opening-area



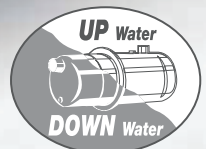
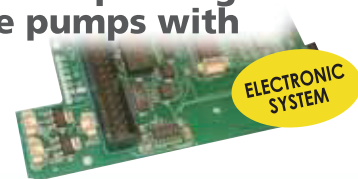
Handle ERGOGRIP
(Optional)

X-MO

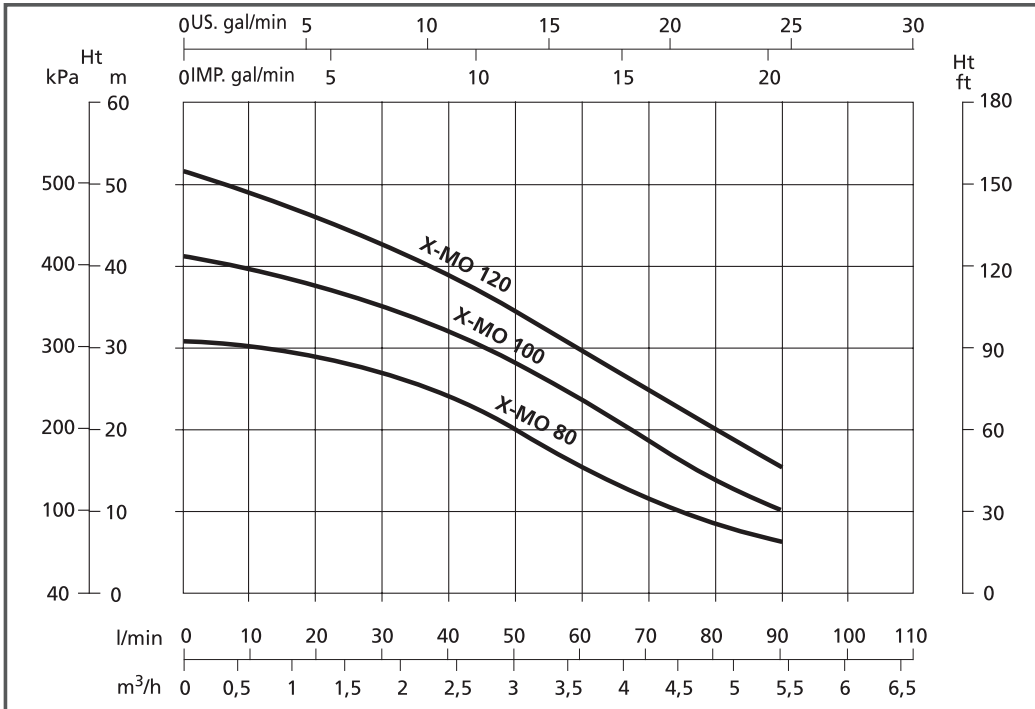
Horizontal self-priming
Multistage pumps

X-AMO

Horizontal self-priming
Multistage pumps with
electronic
system



WORKING FEATURES



Pump body with delivery port



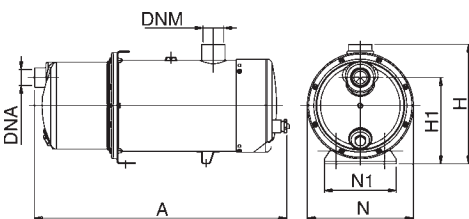
Front foot



Inox Impeller

HYDRAULIC PERFORMANCE TABLE

CODE	Volt. Hz 50	Nominal Power P ₂		Capacitor		Input Current Amp. 1 - 230	CAPACITY									
		kW	HP	μF	Vc		Q		Total head							
							lt /min	0	30	40	50	60	70	80	90	100
X-MO 80	230	0,60	0,8	16	450	4,8	H m	33	28	23	20	18	13	10	7	
X-MO 100	230	0,75	1	18	450	6,0		42	35	30	28	24	18	15	10	
X-MO 120	230	0,90	1,2	20	450	7,2		52	43	40	35	30	25	20	15	8



SIZE AND WEIGHT

CODE	Dimensions (mm)							Weight
	A	N	H	H1	N1	DNM	DNA	kg
X-MO 80	477	200	226	163	136	1"1/4	1"	15,50
X-MO 100	477	200	226	163	136	1"1/4	1"	16
X-MO 120	477	200	226	163	136	1"1/4	1"	17

STEELPUMPS
EVOLUTION