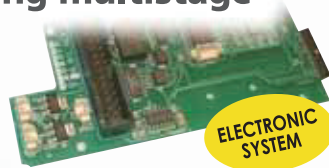


X-MV

Vertical self-priming multistage pumps

X-AMV

Vertical self-priming multistage pumps with electronic system



APPLICATIONS

- Civil pressurization
- Fountains and water-plays
- Sprinkling and sliding civil irrigations
- Depletion and pouring off of tanks
- Industrial washings
- Treatment of drinkable water
- Cooling systems

Sucked liquid:

Clean water, without abrasive and suspended parts

INSTALLATION

Steel pumps electropumps are suitable for:

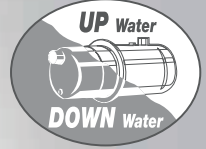
- surface installation
- submerged installation

TECHNICAL FEATURES

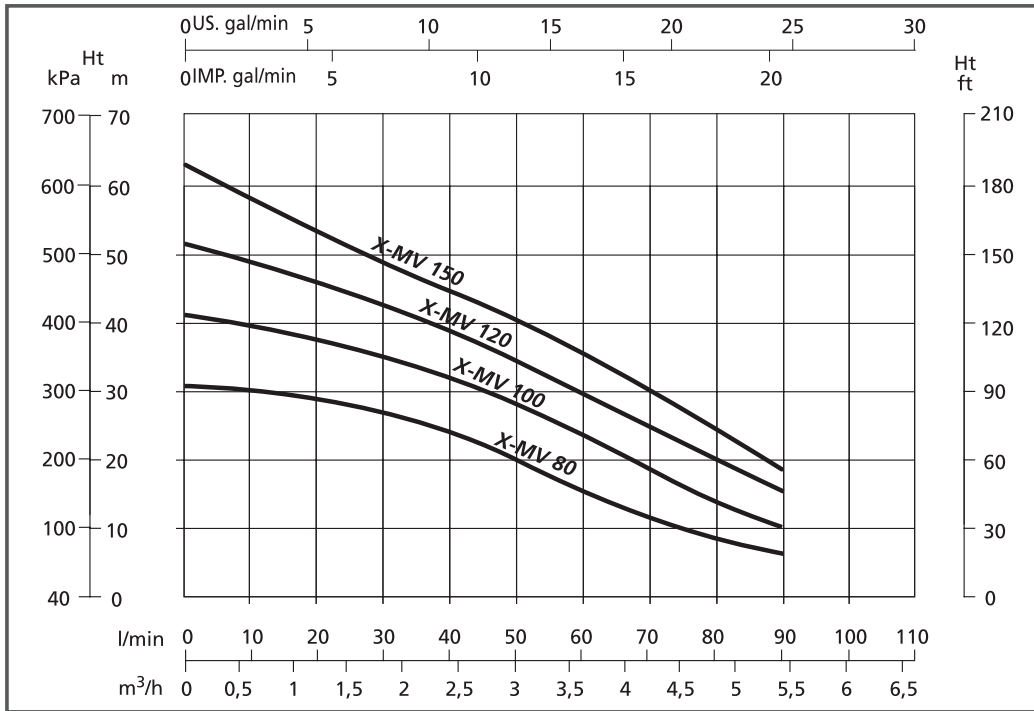
- Pump body: stainless steel Aisi 304
- Motor body with back cap: stainless steel Aisi 304
- Back bracket: stainless steel Aisi 304
- Shaft: stainless steel Aisi 416
- Impellers: stainless steel Aisi 304
- Diffusers: Techno-polymer
- **Mechanical seal: silicon-silicon**
- Cooled motor (by water) of Class F and Service S1 with thermic protection
- Electric power cable H07 RN-F mt. 10 with plug
- **Protection class of the pump IP 68**
- Temperature of the pumped liquid from +2°C to +37°C (18 to 70 Fahrenheit)

AUTOMATIC VERSION

- Electronic board with Microprocessor
- Flow sensor with cobalt Samario magnets
- Pressure gauge for pressure check
- Built-in check-valve
- Techno-polymer safety-box for the board opening-area



WORKING FEATURES



Grommet



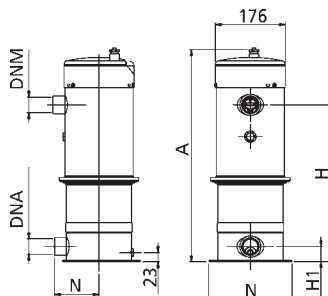
Stainless Steel Impeller



Coupling Flange

HYDRAULIC PERFORMANCE TABLE

CODE	Volt. Hz 50	Nominal Power P ₂ kW HP		Capacitor µF Vc		Input Current Amp. 1 - 230	Q CAPACITY									
							lt /min	Total head								
								0	30	40	50	60	70	80	90	100
X-MV 80	230	0,60	0,8	16	450	4,8	H metri	33	28	23	20	18	13	10	7	
X-MV 100	230	0,75	1	18	450	6,0		42	35	30	28	24	18	15	10	
X-MV 120	230	0,90	1,2	20	450	7,2		52	43	40	35	30	25	20	15	8
X-MV 150	230	1,10	1,5	22	450	7,6		63	49	45	41	36	30	25	19	10



SIZE AND WEIGHT

CODE	Dimensions (mm)							Weight kg
	A	N	H	H1	N	DNM	DNA	
X-MV 80	533	210	394	38	112	1"1/4	1"1/4	16,50
X-MV 100	533	210	394	38	112	1"1/4	1"1/4	17
X-MV 120	533	210	394	38	112	1"1/4	1"1/4	18
X-MV 150	533	210	394	38	112	1"1/4	1"1/4	19

STEELPUMPS
EVOLUTION